

Henley Winter Series 2021/22

Race format, rules & conditions

Dragonboats - One lap of the HWS course - standing start outside the Eyot Centre, turning on Temple Island, and turning on the top island near Marsh lock. Finishing outside the Eyot Centre.

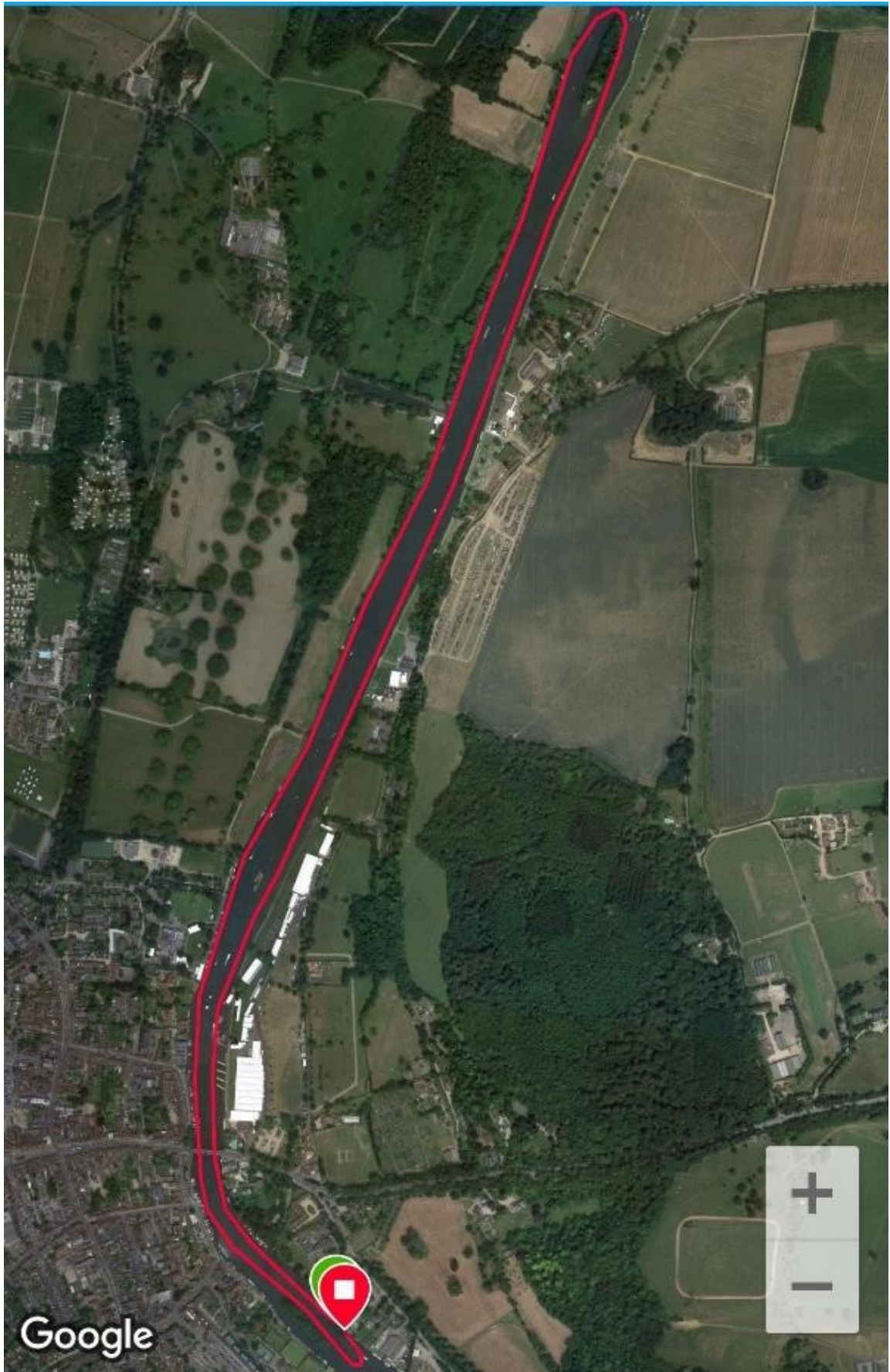
Outriggers - Two laps of the HWS course. Standing start outside the Eyot Centre, turning on Temple Island. Turning for the second lap around the yellow buoy outside the Eyot Centre. Finishing outside the Eyot Centre.

SUPs - One lap of the HWS course - standing start outside the club. Turning outside the Eyot Centre around the yellow buoy and finishing outside the Eyot Centre.

Start order: SUPs / Outriggers / Dragonboats

- All craft will start from a standing start outside the Eyot Centre.
- Boats will be set off 30 seconds apart
- Henley Dragons/ supporters will be there to help you load your boat. We have an extensive water frontage now, so please move boats down the landing stage away from the beach area when boarding craft. It will be down to your team to be on the start line 5 minutes before your race time.
- We will provide you with your race number and order in which you will be sent to race on the day.
- There will be two courses this year. 7km & 12km. One lap will be completed by the dragon boats, two laps (turning on the yellow buoy outside the Eyot Centre) for the outrigger canoes. SUPs will also be introduced to this race - they will be completing one lap of HWS, turning on the yellow buoy and finishing.
- Helms for this race must be recognised as 'Basic' by the BDA and can use this towards their advanced assessments.
- Dragon Boat Standard, Dragon Boat Small, V6, V3, C4, C6, Bell Boats, outriggers and SUPs will all be welcome
- We will be having several suppliers to our sport with stands in the main hall. With Christmas fast approaching it's an ideal chance to buy a new paddle or seat pad! If you would be interested in having a stand please let us know.

COURSE MAP



Race Entry Conditions for the Henley Winter Series 2021/2022

1. **THE COMPETITION:** The Henley Winter Series is a series of long distance races run during the winter months. Crews are invited to attend any number of races in the Series. There will a trophy awarded to the first three crews in each race for each category (i.e. Dragonboats and Outriggers), and an overall winner of the Series. The Series is intended to provide a focus and social environment for Dragon Boat paddlers and other paddlers during the winter months. Any proceeds raised by the Series will help furnish and equip the Eyot Centre building and the clubs which use it.
2. **RACING RULES:** Full details of the course and race rules will be available on the day at the Crew Manager/Helms meeting, and from the Henley Dragons website at www.henleydragons.com / [Facebook](#) or can be obtained on request from henleydragons@outlook.com.
3. **SAFETY AND EQUIPMENT:**
 - All Crew Members must be water competent and able to swim at least 50 metres in race clothing. It is the Crew Managers responsibility to ensure that this limitation is complied with. No previous experience of Dragon Boat Racing is necessary to enter the Series but crews compete at their own risk.
 - Buoyancy aids must be worn by all competitors and must be supplied by competitors themselves. Boats and all associated equipment must be supplied by participating clubs.
 - Dragon Boat Helms must be a minimum of 'Basic' and a member of the BDA
 - OC Steer person must be a member of British Canoeing and affiliated to a recognised club
 - Captains of each craft must carry a phone in a suitable cover and have the safety marshal's number
 - Steer Persons, Captains and SUP paddlers must attend the safety briefing
 - All U18s must have written consent to take part and a Guardian in the craft
 - Helms of all Dragon Boats must have passed standards set by the BDA with the 7km course being of a 'Basic' standard signed off by a suitable CL3.
 - All craft must display their numbers to their right at all times when racing or on their cheet for outriggers and SUPs.
4. **OPEN RACE FORMAT:** The Henley Winter Series will be run as an OPEN event for the 2021/ 2022 series.
 - Crafts will be set off in category order with SUPs setting off first. They will be followed by the outriggers and dragon boats.
 - There will be a 50 metre over taking rule at both turns and bridge. Time penalties will be given if this is not adhered to and will follow rules set out by the BDA. We will have marshals to supervise turns. Crews must adhere to any instruction provided by the marshals.
 - It is down to the outrigger canoe steers person to monitor the turns as they have full visibility on the turns. The boat in front will have priority with regard to the outrigger canoes. The overtaking boat has the inside lane.
 - The safety briefing will detail how craft are to proceed through the bridge.

- The SUPs must be given a 5 metre gap when being overtaken and on turns.
 - Dragon Boat Standard, Dragon Boat Small, V6, V3, C4, C6, Bell Boats, outrigger canoes and SUPs will all be welcome
5. **NUMBER OF ENTRIES:** Entries will be accepted up to a maximum number of crews to be decided by Henley Dragon Boat Club. Fees will be accepted on a first come first served basis. Entries close seven days before each Series race and an entry is only secured by the payment of a £100 deposit for the 7km distance. If paying by bank transfer an entry will be deemed to be received when clear proof of the deposit is received by the race organiser with the completed entry form by e-mail to henleydragons@outlook.com
 6. **ENTRY FEES:** The Entry fee for each race for the 2021 /2022 series is as follows:
 - a. 7km distance
 - £200 per Dragon Boat (£180 early bird entry) or £100 for a 10 man boat (£80 early bird entry). OC6 are £80 (£60 early bird entry). £10 per paddler in a V3, V4 or bell boat. Early bird entries are accepted before the 24th September 2021.
 - Full payment is preferred on entry which saves time on race day. However, at a minimum, a deposit of £100 (20-man) or £50 (10-man) or £40 (outrigger) is required to secure an entry at a race for the 7k distance.
 - A fee of £20 per SUP paddler per race.
 - A discount of £10 per boat is available to crews entering and paying in full for all four races in advance. Cheques should be payable to The Eyot Centre. Direct payments to: Lloyds Bank Sort code: 30 94 13 Account number 00249406. Please ensure your club name and the Event date is clearly referenced.
 7. **EVENT CANCELLATION:** If a race is cancelled due to weather conditions/high water levels before the day, the entry fee will be refunded in full. If the race is cancelled for similar reasons on the race day, a refund of half the entry fee will be offered. The remainder of the entry fee will be retained by Henley Dragon Boat Club for costs incurred in setting up the event. Any crew looking to cancel will be required to give at least five day's notice in order to receive back their entry fee. Late cancellation will be treated on a case by case basis by the organisers of the event.
 8. **ADDITIONAL COSTS:** £10.00 per any craft which is not licensed on a UK waterways and £10.00 per dragon boat that does not have affiliation to the BDA and £10.00 per other type of boat that does not have affiliation to British Canoeing.
 9. **HIRE OF BOATS:** Henley have 1 x 20 man boats and 1 x 10 man boat that can be hired out on a first come first served basis for each event. The cost of hiring the boats will be £100 for a 20 man boat and £50 for a 10 man boat.